

*No. 1 choice  
of hospitals  
& mothers*

Are you interested in saving Time  
and improving Comfort?



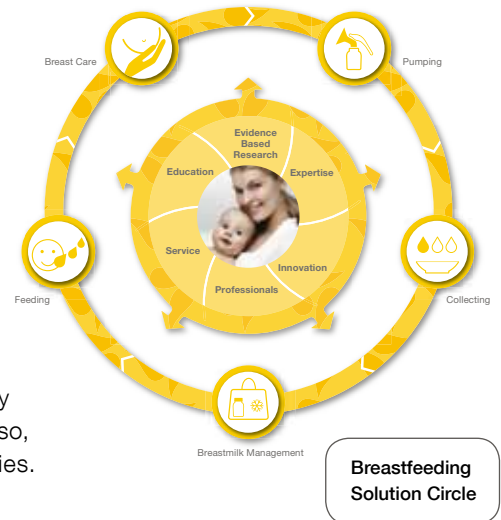
- I Practical:** simple and safe, for hassle-free operation
- I Efficient:** more milk in less time, for satisfied mothers
- I Reliable:** research-based, market-tested solutions, so that you feel safe and reassured when using the product
- I Flexible:** adapts to individual patients' needs



# Our Hospital grade Breastpumps: Developed by Professionals for Professionals.

As a leading breastfeeding partner in the hospital sector, we have contributed to babies' welfare for almost 50 years: We support professionals and help mothers with innovative and research-based products throughout lactation – to ease and enrich their lives.

This is especially important when mothers are unable to breastfeed: that is when our hospital grade breastpumps ensure that mother's milk reaches the newborn child in the safest and simplest manner. Our comprehensive breastfeeding solutions have been designed to reliably deliver mother's milk to where it is needed: in the baby's tummy. In doing so, our objective is the same as yours: satisfied and healthy mothers and babies.



## Symphony: The Breastpump of all Breastpumps

The emotional closeness and relationship between mother and baby during breastfeeding is very special. It is no wonder then that mothers are reluctant to place their trust in a breastpump. Our understanding and knowledge of the needs of both mother and baby has helped us, in partnership with the University of Western Australia, to develop a breastpump that functions just like nature itself: Symphony.

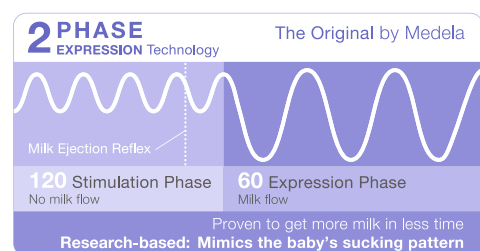
### Can research really translate into simplicity?

By virtue of its unique 2-Phase Expression Technology, the pump imitates the natural sucking behaviour of babies at the mother's breast.<sup>1</sup> This not only feels more pleasant, but also provides maximum efficiency: studies confirm that Symphony generates more milk in less time<sup>2,3</sup>, and in spite of its sophisticated technical refinements, it is still very easy to use. Thanks to its one-button operation, Symphony works in an intuitive manner – allowing you to invest more time in providing care, rather than browsing instruction manuals. The Comfort Flow Zone ensures maximum pump comfort: Symphony is markedly gentle on extremely sensitive breast tissue.

### Can such simplicity be reliable?

A protective membrane completely separates the pump set from the pump mechanism – and reliably prevents overflow. This allows Symphony to meet not only the most stringent hygiene standards in hospitals, but also the high expectations of mothers.

Many Symphony breastpumps are already in use in the market today, where they have met with a high degree of customer appreciation. The large number of satisfied mothers and carers is testament to the reliability and high quality of our products.



### Standard 2.0 Card

The Standard 2.0 program is ideal for all mothers who express milk either occasionally or regularly. The program has been designed to replicate the healthy and natural conditions of an established breastfeeding pattern. It employs our 2-Phase Technology: at the outset, it simulates the stimulation phase, which is then followed by the expression phase. This program card is always included with the Symphony.



Standard 2.0 Card

### Up to date: Following the latest Research Upgrades.

The Symphony benefits from unique functionality: you can carry out upgrades with the help of pump programs that are available in a credit card-sized format. Exceedingly simple and practical – all you need to do is change the card. For a first upgrade we looked at the challenges of a pump-dependent mother of a premature infant. The result: Premie+.



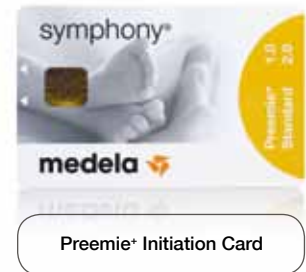
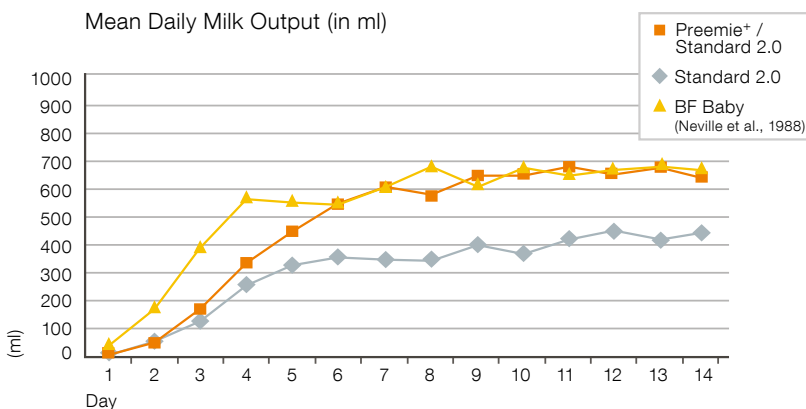
### Premie+ Initiation Card

Is getting sufficient breastmilk in a NICU a real challenge? Based on research, the Premie+ Initiation Card has been designed specifically to meet this challenge. It assists in initiating and maintaining lactation in breastpump-dependent mothers of premature infants.<sup>4</sup>

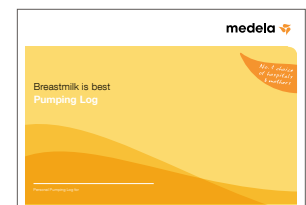
The program replicates the varying sucking and pausing rhythm of newborn babies during the early post-birth period. The Premie+ Initiation program is used until Lactogenesis II, at which stage the Standard 2.0 program is used. Both programs are stored on the same card, making the pump flexible and easy to use.

### Mothers produce significantly more milk

Premie+ helps more mothers make enough to feed exclusively with human milk at the time of NICU discharge. Mothers' milk output with the Premie+ program card was significantly greater than with Standard 2.0 alone, reaching the same volume as term mothers by day 6 and matching the output levels through the remainder of the 14 day period.<sup>5</sup>



Premie+ Initiation Card



Pumping Log designed for the unique challenges of pump-dependent mothers in the NICU

[www.medela.com](http://www.medela.com)

### References

1. Jacqueline C. Kent, Donna T. Ramsay, Dorota A. Doherty, Michael Larsson, Peter E. Hartmann. Response of breasts to different stimulation patterns of an electric breastpump. *Journal of Human Lactation* 19(2) 2003.
2. Leon R. Mitoulas, Ching Tat Lai, Lyle C. Gurrin, Michael Larsson, Peter E. Hartmann. Effect of vacuum profile on breastmilk expression using an electric breastpump. *Journal of Human Lactation* 18(4) 2002.
3. Jacqueline C. Kent, Mark D. Cregan, Dorota A. Doherty, Leon R. Mitoulas, Donna T. Ramsay, Peter E. Hartmann. The effect of vacuum on the removal of milk using an electric breastpump. *Breastfeeding Medicine* Volume 1, Number 1, 2006.
4. Paula P. Meier, Janet L. Engstrom, Judy E. Janes, Brian R. Jegier. Mothers of premature infants produce more milk with new initiation suction pattern that mimics the sucking rhythm of term infants during breastfeeding in the early post-birth period. Submitted for publication, 2009.
5. Neville MC, Keller R, Seacat J, Lutes V, Neifert M, Casey C, Allen J, Archer P. Studies in human lactation: milk volumes in lactating women during the onset of lactation and full lactation. *Am J Clin Nutr.* 48: 1375 - 86, 1988.

### Symphony Order Reference

| Symphony Breastpump     |   | Qty |
|-------------------------|---|-----|
| Article Number          | Product   |     |
| *Variable               | Symphony Standard Version<br>includes research-based 2-Phase Expression pump pattern (Standard 2.0)<br>and a bottle stand   | 1   |
| *Variable               | Symphony Battery Version<br>includes research-based 2-Phase Expression pump pattern (Standard 2.0)<br>and a bottle stand  | 1   |
| *Variable               | Preemie <sup>+</sup> Bundle<br>for the NICU we recommend upgrading the Symphony with<br>the Preemie <sup>+</sup> Initiation Card to assist initiating and maintaining<br>lactation in breastpump-dependent mothers of premature infants | 1   |
| Accessories to Symphony |   |     |
| 600.0832                | Mobile Stand  | 1   |
| 810.0552                | Bottle Stand  | 1   |
| 600.7073                | Hard Case   | 1   |
| 600.0816                | Card and Cord Protector   | 1   |
| 928.1017                | Car Connection Cable for Symphony   | 1   |
| *Variable               | Pumping Log for Mothers of Premature Infants  | 100 |

\*depending on language, voltage, and/or plug

Pump sets, bottles, and teats are available in various configurations.  
Find out more at [www.medela.com](http://www.medela.com) or contact your local Medela representative.